

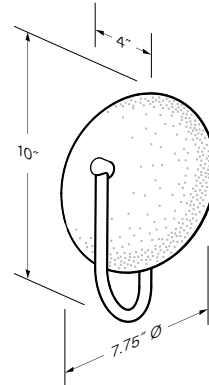
Demi Sconce



Demi Sconce



satin brushed brass



Dimensions*: 7.75"Ø x 10" x 4"

Materials: glass, metal

Product weight*: 7.5 lbs

Light source: integrated LED

Light output: Constant CCT: 816 Lumens (source), based on 2700 K / Warm Dim: 852 Lumens (source), based on 3000 K

Light color: 2700 K, 3000 K, or Warm Dim (1800 K - 3000 K)

Color accuracy: 90+ CRI

Power usage: 10.5 W

Dimmability: TRIAC, ELV, and 0-10 V dimming

Driver location: Can be housed in J-box, or remotely

Driver dimensions: 2.69" x 1.56" x 0.69"

UL listed for damp locations

Specifications subject to change



MATERIAL & FINISH OPTIONS

Demi Sconce part # S03-5510 -

Glass Finish

crystal sand glass 190

Metal Finish

satin brushed brass SB

satin distressed brass DB

Lamping

2700 K LED 27

3000 K LED 30

Warm Dim LED (1800 K - 3000 K) WD

Driver

120V - 277V AC input voltage P1

TRIAC, ELV, & 0-10 V dimming



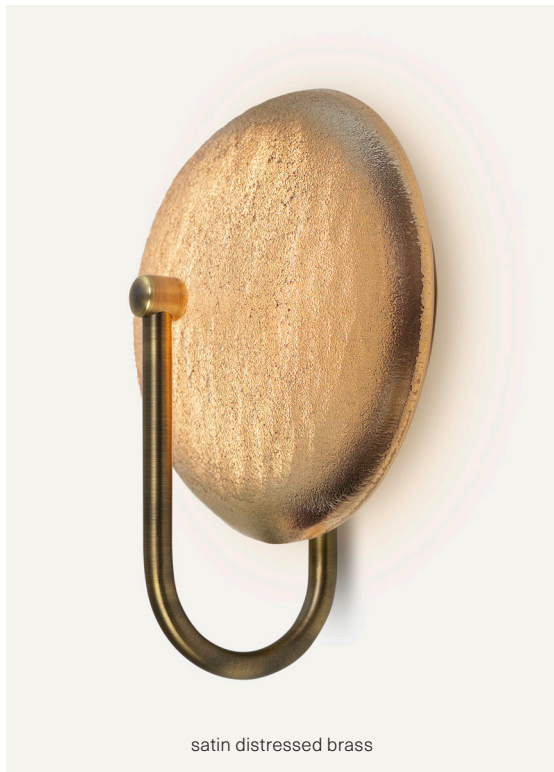
crystal sand glass



satin brushed brass



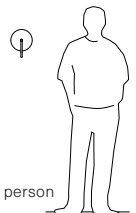
satin distressed brass



satin distressed brass

Siemon & Salazar's latest sconce utilizes the ancient technique of sand casting, which creates a tactile texture on the glass that also helps diffuse the light. A hand-formed brass armature secures the hemispherical piece of glass. The design is beautiful, possessing a sense of elegant jewelry while also being functional.

* Each piece of glass is a unique work of art. Dimensions, weight, and color will vary. When multiple fixtures are installed next to each other, expect some variation in shape and color.



6' tall person